

Pattern adapted by Amy Celona  
www.ustamp4fun.com

# "Loves Me" Mailbox

**Set(s):** Be Happy, Very Punny, So Very

**Accessories:** Sweet on You Designer Series Paper (cut 12" x 6"); Regal Rose cardstock (1 sheet/project, see below)  
Whisper White 1/8 piece of cardstock  
Chocolate Chip or Taken with Teal cardstock strip (depending upon the mailbox design)  
Pocket Notes (Vanilla, Pink & Brown), 1 each color per project,  
Regal Rose, Taken with Teal, Chocolate Chip ink pads, 1 1/4 inch jumbo circle punch, 3/4 inch circle punch, white gen pens, rectangle punch

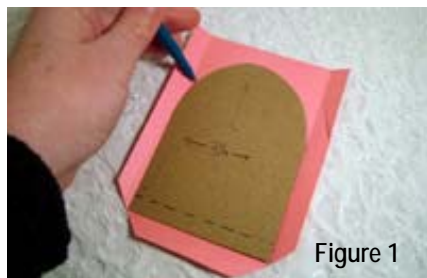
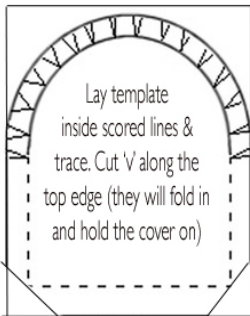


Figure 1

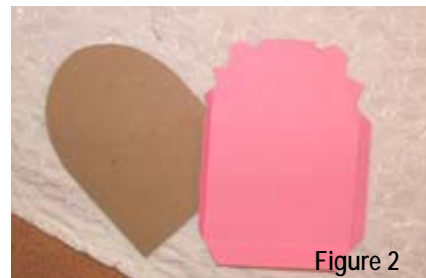


Figure 2

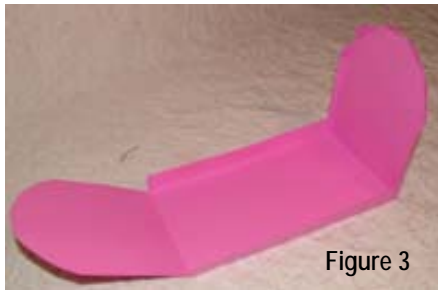


Figure 3



Figure 4

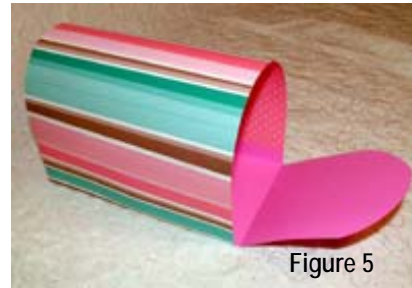
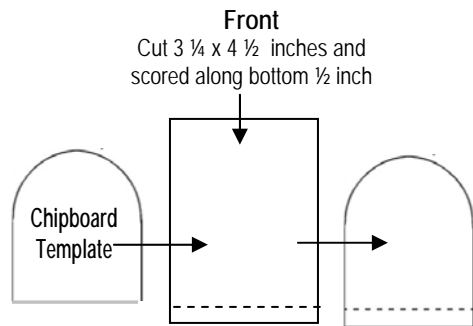
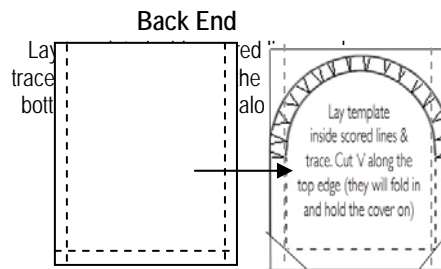


Figure 5



### Front Flap

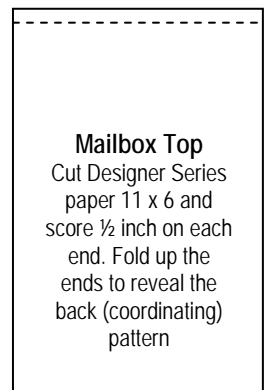
Position the chipboard template above the scored line and cut along the top arc. Run glue along the scored flap and position UNDER the front of the mailbox



### Back End

Cut 4 1/4 x 5 inches and score along three sides at 1/2 inch. Position chipboard inside the score lines and also trace and score along top arch. Cut "v" marks along the arch.

See Figures 1 & 2



### Bottom

Cut 4 1/4 x 6" and score along each edge at 1/2 inch